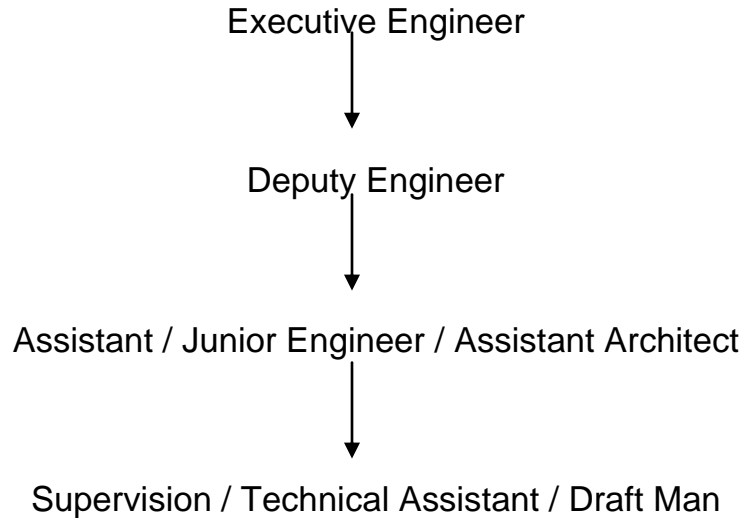


Surat Municipal Corporation

Garden Project Cell

Channel of Supervision :-



Major Duties :

Executive Engineer	:	Overall In-charge of all sites for execution & administration of department.
Deputy Engineer	:	Overall supervision of all sites including managerial works of department.
Assistant Architect	:	Planning of New Gardens, Lakes & Zoo
Assistant / Junior Engineer	:	Overall supervision & execution of individual sites including preparation of estimate, tender, layouts on sites, measurements & preparation of Bills.
Supervision / Technical Assistant	:	Complete supervision of works executed on sites. Quality checking. Layouts on sites, measurements.
Draft Man	:	Drawing the Plans suggested by Assistant Architect