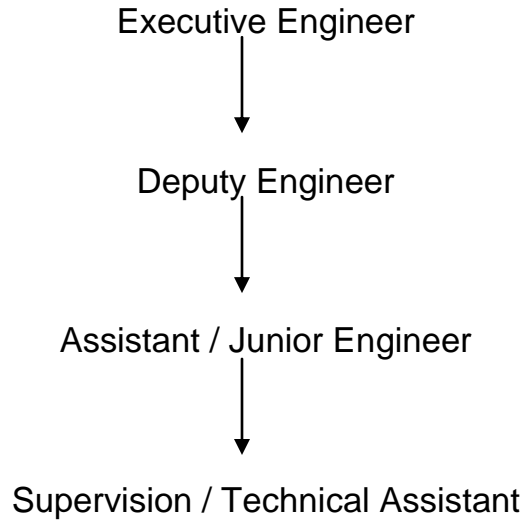


Surat Municipal Corporation

Slum Upgradation Cell

Channel of Supervision :-



Major Duties :

Executive Engineer	:	Overall In-charge of all sites for execution & administration of department.
Deputy Engineer	:	Overall supervision of all sites including managerial works of department.
Assistant / Junior Engineer	:	Overall supervision & execution of individual sites including preparation of estimate, tender, layouts on sites, measurements & preparation of Bills.
Supervision / Technical Assistant	:	Complete supervision of works executed on sites. Quality checking. Layouts on sites, measurements.