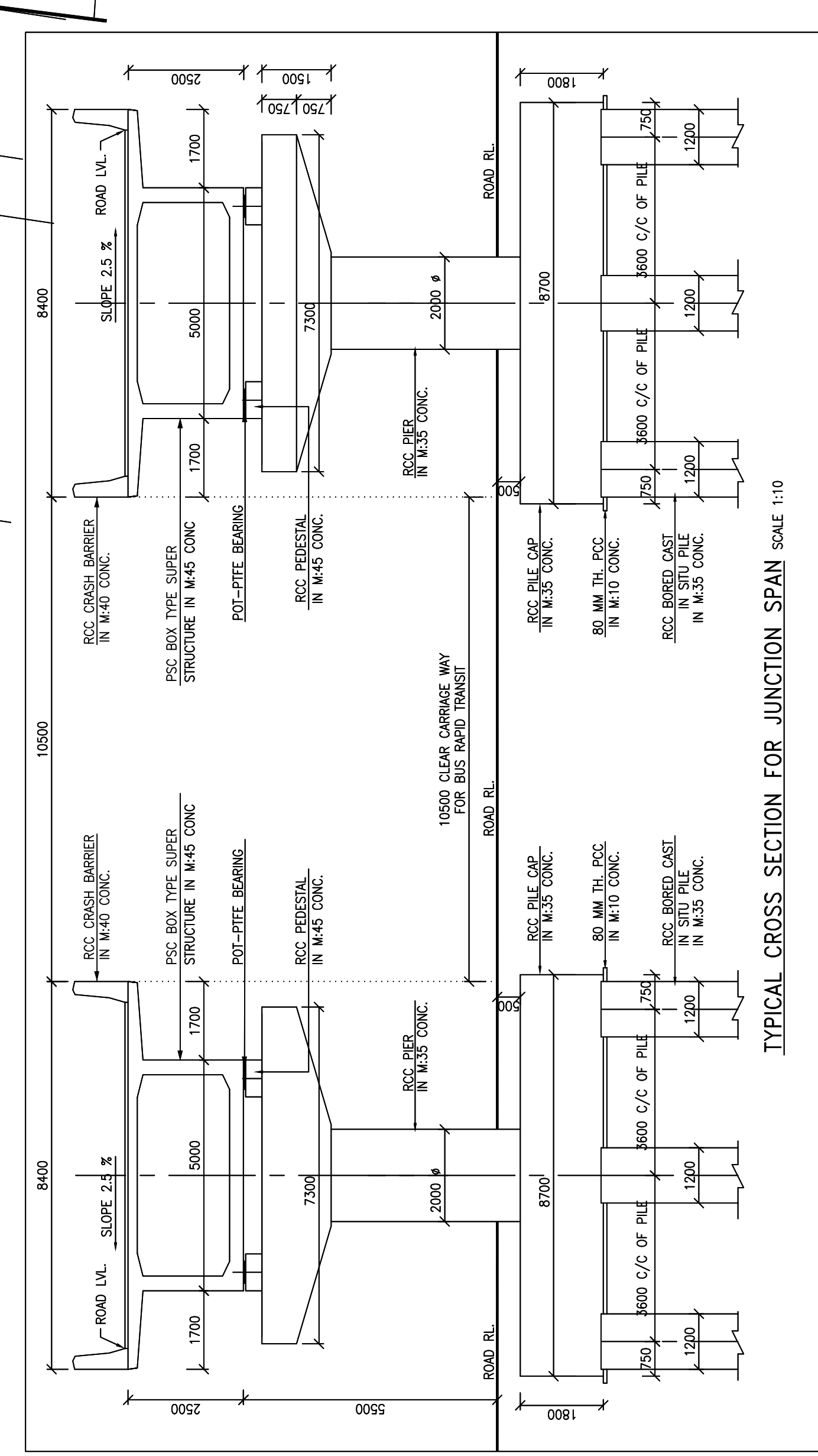
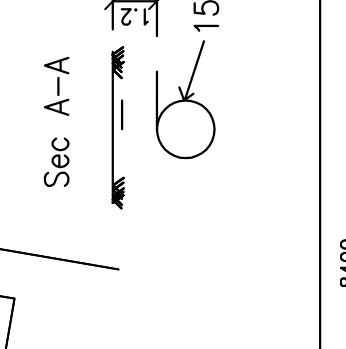
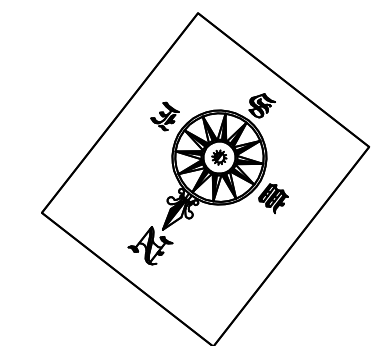
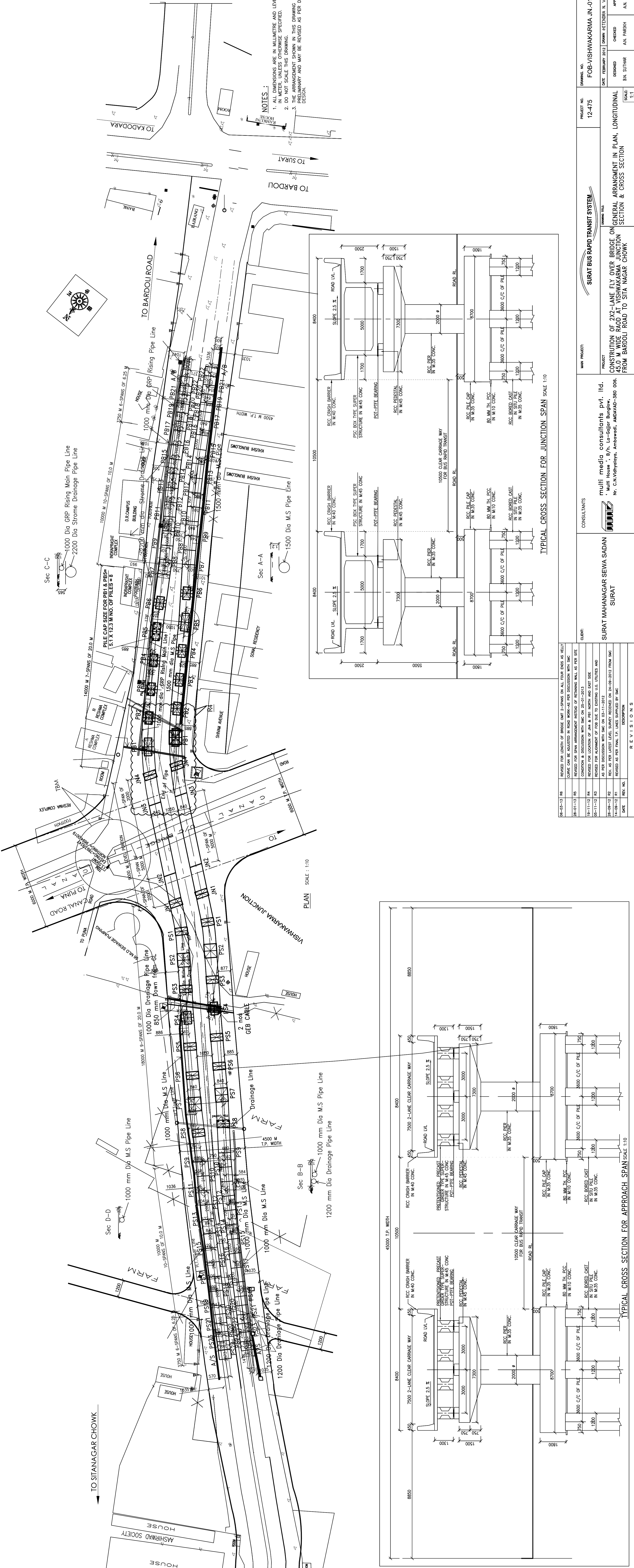


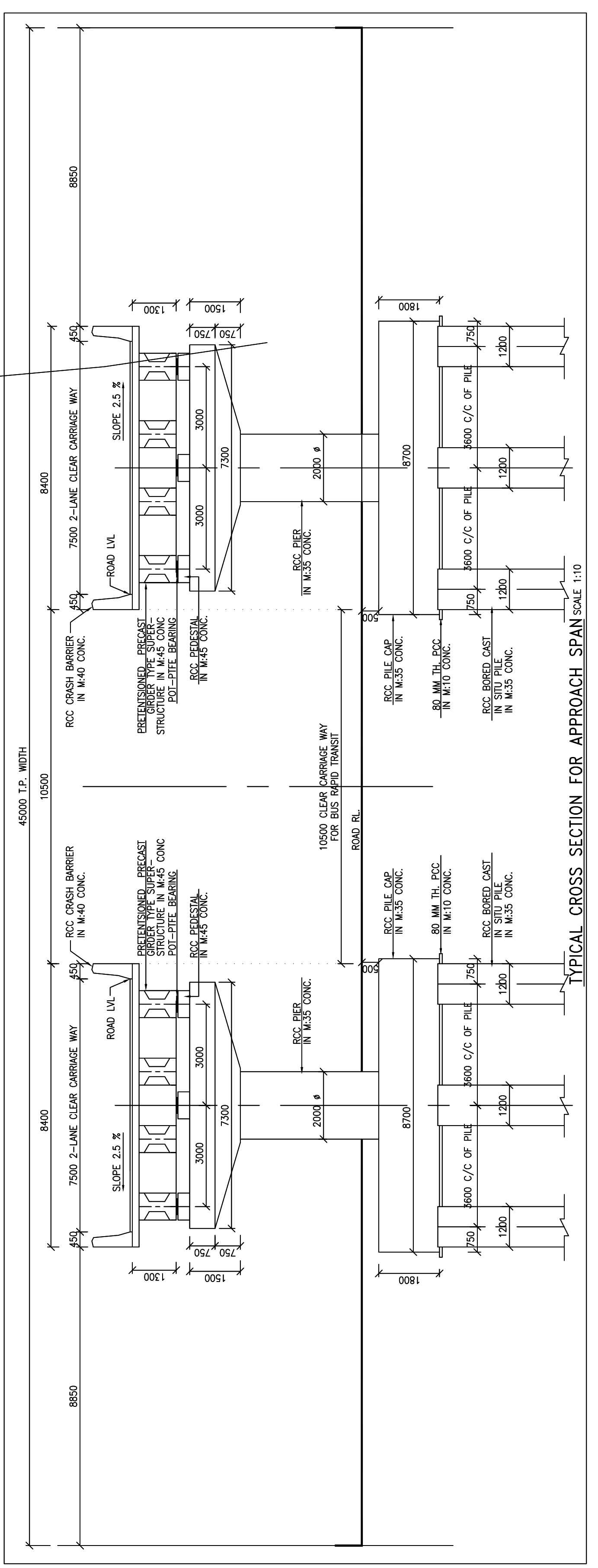
STATION	CHANGING IN METER	FORMATION LEVEL IN METER	GROUND LEVELS AS PER NEW SURVEY ON DATA SIDE	GROUND LEVELS AS PER OLD SURVEY
448.45	11.149	11.149	11.149	11.149
422.25	11.117	11.117	11.117	11.117
392.10	11.131	11.131	10.895	11.131
375.16	11.137	10.895	11.025	11.137
364.55	11.140	11.140	11.140	11.140
354.55	11.106	11.106	11.106	11.106
335.35	11.106	11.106	11.106	11.106
324.13	11.106	11.106	11.106	11.106
292.10	11.110	11.110	11.110	11.110
275.75	11.216	11.216	11.431	11.216
261.57	11.431	11.431	15.039	11.431
246.15	11.429	11.429	15.376	11.429
225.16	11.529	11.529	15.712	11.529
217.00	11.559	11.559	15.599	11.559
205.16	11.535	11.535	11.400	11.535
187.50	11.745	11.745	11.505	11.745
183.10	11.759	11.633	11.505	11.759
165.16	11.750	11.655	11.921	11.750
157.80	11.921	11.921	11.921	11.921
145.16	11.885	11.755	18.402	11.885
128.70	12.083	12.083	19.074	12.083
108.25	11.995	11.995	19.247	11.995
88.16	11.853	11.853	20.419	11.853
84.10	11.853	11.853	21.092	11.853
48.70	11.967	11.967	21.764	11.967
45.16	11.954	11.954	21.870	11.954
28.50	11.881	11.881	22.153	11.881
28.50	11.881	11.881	22.153	11.881
24.84	12.773	12.825	22.210	12.773
36.35	12.724	12.724	21.991	12.724
44.84	12.694	12.665	21.762	12.694
55.90	12.655	12.655	21.655	12.655
64.84	12.654	12.705	21.615	12.654
76.40	12.652	12.652	20.429	12.652
84.84	12.678	12.650	12.652	12.678
104.84	12.710	12.585	12.665	12.710
128.35	12.689	12.689	12.655	12.689
144.54	12.688	12.688	12.658	12.688
164.84	12.610	12.610	12.675	12.610
169.50	12.610	12.610	12.675	12.610
184.84	12.605	12.605	12.675	12.605
190.50	12.600	12.600	12.675	12.600
211.30	12.583	12.583	12.583	12.583
230.40	12.440	12.440	12.440	12.440
250.20	12.487	12.487	12.487	12.487
271.00	12.482	12.482	12.482	12.482
291.20	12.495	12.495	12.495	12.495
313.95	12.384	12.384	12.384	12.384
334.84	12.499	12.499	12.440	12.499
353.20	12.501	12.501	12.501	12.501
371.45	12.246	12.246	12.246	12.246
392.05	12.119	12.119	12.119	12.119
420.25	11.824	11.824	11.824	11.824
444.85	12.233	12.233	12.233	12.233

LONGITUDINAL SECTION OF BRIDGE ALIGNMENT WEST SIDE BRIDGE

SCALE: HORIZONTAL: 1 CM = 10 M, VERTICAL: 1 CM = 1.0 M



TYPICAL CROSS SECTION FOR JUNCTION SPAN SCALE: 1:10



TYPICAL CROSS SECTION FOR APPROACH SPAN SCALE: 1:10

NOTES:
 1. ALL DIMENSIONS ARE IN MILLIMETRE AND LEVELS ARE IN METRE, UNLESS OTHERWISE SPECIFIED.
 2. THE ARRANGEMENT SHOWN IN THIS DRAWING IS PRELIMINARY AND MAY BE REVISED AS PER DETAILED DESIGN.

NO.	REVISION	DATE
01	ISSUED FOR TENDER	20-01-2013
02	REVISION FOR SPAN ARRANGEMENT	20-01-2013
03	REVISION FOR LOCATION OF PIER & PILE	20-01-2013
04	REVISION FOR LOCATION OF PIER & PILE	20-01-2013
05	REVISION FOR LOCATION OF PIER & PILE	20-01-2013
06	REVISION FOR LOCATION OF PIER & PILE	20-01-2013
07	REVISION FOR LOCATION OF PIER & PILE	20-01-2013
08	REVISION FOR LOCATION OF PIER & PILE	20-01-2013
09	REVISION FOR LOCATION OF PIER & PILE	20-01-2013
10	REVISION FOR LOCATION OF PIER & PILE	20-01-2013
11	REVISION FOR LOCATION OF PIER & PILE	20-01-2013
12	REVISION FOR LOCATION OF PIER & PILE	20-01-2013
13	REVISION FOR LOCATION OF PIER & PILE	20-01-2013
14	REVISION FOR LOCATION OF PIER & PILE	20-01-2013
15	REVISION FOR LOCATION OF PIER & PILE	20-01-2013
16	REVISION FOR LOCATION OF PIER & PILE	20-01-2013
17	REVISION FOR LOCATION OF PIER & PILE	20-01-2013
18	REVISION FOR LOCATION OF PIER & PILE	20-01-2013
19	REVISION FOR LOCATION OF PIER & PILE	20-01-2013
20	REVISION FOR LOCATION OF PIER & PILE	20-01-2013
21	REVISION FOR LOCATION OF PIER & PILE	20-01-2013
22	REVISION FOR LOCATION OF PIER & PILE	20-01-2013
23	REVISION FOR LOCATION OF PIER & PILE	20-01-2013
24	REVISION FOR LOCATION OF PIER & PILE	20-01-2013

PROJECT NO: 12-475
 PROJECT: CONSTRUCTION OF 2X2-LANE FLY OVER BRIDGE ON GENERAL ALIGNMENT IN PLAN, LONGITUDINAL SECTION & CROSS SECTION FROM BARDOLI ROAD TO SITA NAGAR CHOWK

CONSULTANTS: multi media consultants pvt. ltd.
 multi House, 1/8/A, La-Older Building,
 Nr. Chhatrapati, Amnagar, Vadodra-390 006.

DESIGNER: SURAT MAHAGAR SEVA SADAN
 SURAT

DATE: FEBRUARY 2012
 DRAWN: HETODRA, N. VANAKA
 CHECKED: AN. PARDHI
 APPROVED: AN. PARDHI