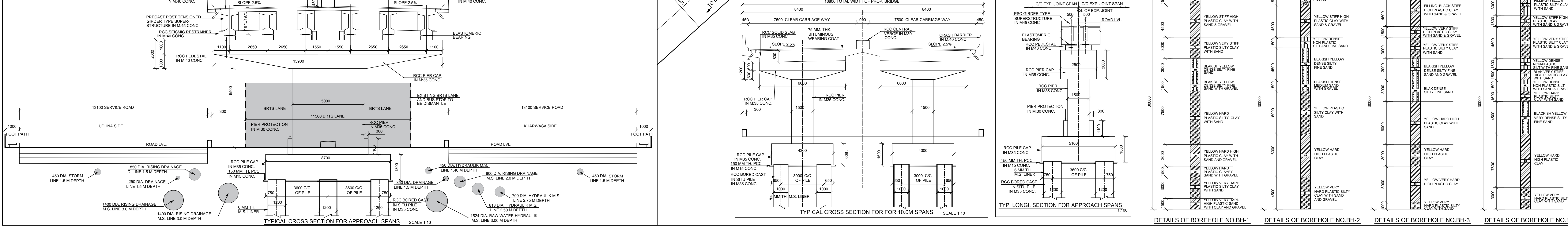
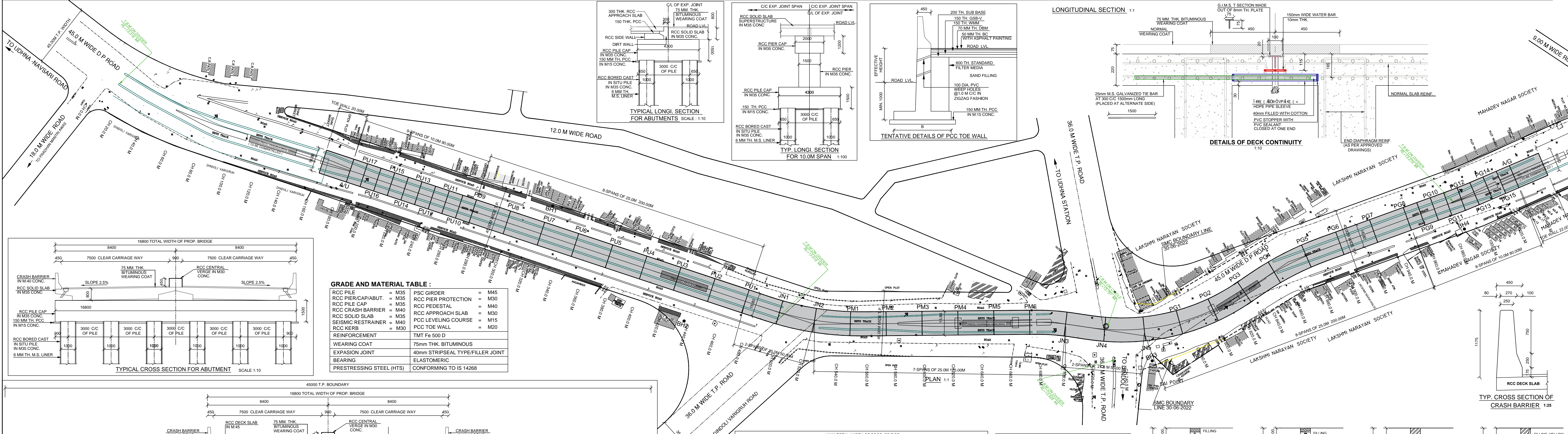


Station	FRL	Pier Cap/Abut Cap Top	Pier Cap/Abut Cap Bottom	Pier Bottom	Pier Top	Pier Depth	Depth of Lier
AU1	13.468	12.593	12.593	12.1	10.6	15	1.50
PU17	13.987	12.922	12.922	12.1	10.6	15	1.50
PU16	14.12	13.245	13.245	12.1	10.6	15	1.50
PU15	14.454	13.579	13.579	12.1	10.6	15	1.50
PU14	14.787	13.912	13.912	12.1	10.6	15	1.50
PU13	15.09	14.215	14.215	12.1	10.6	15	1.50
PU12	15.453	14.578	14.578	12.1	10.6	15	1.50
PU11	15.787	14.912	14.912	12.1	10.6	15	1.50
PU10	16.12	15.245	15.245	12.1	10.6	15	1.50
PU9	16.453	15.579	15.579	12.228	12.1	10.3	25
PU8	17.286	15.901	15.901	12.4	10.6	25	3.00
PU7	18.12	15.895	15.895	12.4	10.6	25	3.00
PU6	18.953	16.728	16.728	12.4	10.6	25	3.00
PU5	19.786	17.561	17.561	12.4	10.6	25	3.00
PU4	20.619	18.394	18.394	12.4	10.6	25	3.00
PU3	21.452	19.227	19.227	12.4	10.6	25	3.00
PU2	22.286	20.060	20.060	12.4	10.6	25	3.00
PU1	23.119	20.893	20.893	12.4	10.6	25	3.00
JN1	23.952	21.726	21.726	12.4	10.6	25	3.00
JN2	24.785	22.559	22.559	12.4	10.6	25	3.00
PM1	25.618	23.392	23.392	12.4	10.6	25	3.00
PM2	26.451	24.225	24.225	12.4	10.6	25	3.00
PM3	27.284	25.058	25.058	12.4	10.6	25	3.00
PM4	28.117	25.891	25.891	12.4	10.6	25	3.00
PM5	28.950	26.724	26.724	12.4	10.6	25	3.00
PM6	29.783	27.557	27.557	12.4	10.6	25	3.00
JN3	30.616	28.390	28.390	12.4	10.6	25	3.00
JN4	31.449	29.223	29.223	12.4	10.6	25	3.00
JN5	32.282	30.056	30.056	12.4	10.6	25	3.00
PG1	33.115	30.889	30.889	12.4	10.6	25	3.00
PG2	33.948	31.722	31.722	12.4	10.6	25	3.00
PG3	34.781	32.555	32.555	12.4	10.6	25	3.00
PG4	35.614	33.388	33.388	12.4	10.6	25	3.00
PG5	36.447	34.221	34.221	12.4	10.6	25	3.00
PG6	37.280	35.054	35.054	12.4	10.6	25	3.00
PG7	38.113	35.887	35.887	12.4	10.6	25	3.00
PG8	38.946	36.720	36.720	12.4	10.6	25	3.00
PG9	39.779	37.553	37.553	12.4	10.6	25	3.00
PG10	40.612	38.386	38.386	12.4	10.6	25	3.00
PG11	41.445	39.219	39.219	12.4	10.6	25	3.00
PG12	42.278	40.052	40.052	12.4	10.6	25	3.00
PG13	43.111	40.885	40.885	12.4	10.6	25	3.00
PG14	43.944	41.718	41.718	12.4	10.6	25	3.00
PG15	44.777	42.551	42.551	12.4	10.6	25	3.00
A/G	45.610	43.384	43.384	12.4	10.6	25	3.00



BH1 BORE HOLE BH1 TO BH4 DEPTH = 30.0M

NOTES

- ALL DIMENSIONS AND LEVELS ARE IN METERS UNLESS OTHERWISE MENTIONED.
- ALL DIMENSIONS SHOWN ARE TENTATIVE AND THE SAME SHALL BE REVISAS PER DETAILED DESIGN.
- THE LOCATION AND ARRANGEMENT OF THE BRIDGE MAY UNDERGO CHANGE DURING DETAILED DESIGN, IF REQUIRED.
- THE FORMATION LEVEL OF THE BRIDGE IS TENTATIVE AND MAY CHANGE DURING EXECUTION.
- THE SPAN ARRANGEMENT, DIMENSIONS, NUMBER OF GIRDERS ETC ARE TENTATIVE AND SHALL BE REVISAS AS PER DETAILED DESIGN.
- EXPANSION JOINTS AND BEARINGS SHALL BE FROM WORTH APPROVED MANUFACTURER.
- ROAD FURNITURE ITEM LIKE THERMOPLASTIC PAINT, CAT EYE ETC SHALL BE PROVIDED AS PER MONTH SPECIFICATIONS.
- STEEL 16000 D (CWT) CONFORMING TO IS 1786.
- IN BRIDGE THE ORANGE SPOUT AT EVERY 5.0M INTERVAL SHALL BE PROVIDED IN VERTICAL POSITION AND CONNECTION WITH THE DRIVE TAKE PLACE IN HORIZONTAL AND VERTICAL PLANE.
- THE PROPOSED STRUCTURE IS DESIGNED FOR TWO LANE LOAD LOADING IN ACCORDANCE WITH TABLE-6 OF IRC 6:2019 WITH APPROPRIATE LANE REDUCTION FACTOR AND FOOTPATH LIVE LOAD. FURTHER THE PROPOSED STRUCTURE IS CHECKED FOR IRC CLASS SPECIAL VEHICLE (SV) LOADING AS PER PROVISIONS OF IRC 6:2019.
- SPACING ZONE-18 WILL BE CONSIDERED FOR DESIGN BRIDGE AS PER LATEST CODE PROVISION.
- THE LATEST CODE PROVISION OF IRC-112 SHALL APPLY DURING DETAILED DESIGN.
- STRUCTURAL STEEL GALLERY WITH DIRECTION SIGN TO BE PROVIDED AT THE BOTH END OF BRIDGE AS DIRECTED BY ENGINEER IN CHARGE.

REVISIONS

NO	DATE	DESCRIPTION
01	20-06-2023	REVISED FOR ALIGNMENT OF BRIDGE AT CENTRE OF T.P. INSTEAD OF SPLIT ALIGNMENT DUE TO UNDER GROUND UTILITIES
02	21-09-2022	REVISED AS PER DISCUSSION WITH SMC (AS PER FINAL T.P.)

PROJECT
CONSTRUCTION OF FLY OVER BRIDGES ON EITHER SIDE OF BRITS LANE CROSSING SAI POINT JUNCTION AND DINDOL VARIGIRU T-JUNCTION ON UDHNA-GODDADARA ROAD AT SURAT

CLIENT
SURAT MUNICIPAL CORPORATION

CONSULTANT
Multi Media Consultants Pvt. Ltd.
405, 3rd Floor, Brijesh Cross Road, S.G. Highway, Ahmedabad - 380 015

TITLE
GENERAL ARRANGEMENT IN PLAN, LONGITUDINAL SECTION AND CROSS SECTION.

DRAWN BY INTERAKA, VANKAM
DESIGNED BY D.K. PARIKH
CHECKED BY A. N. PARIKH

SCALE : AS SHOWN
DATE : JULY 2022
PROJ. NO. : 16414
SHEET : 12
REVISION : R2