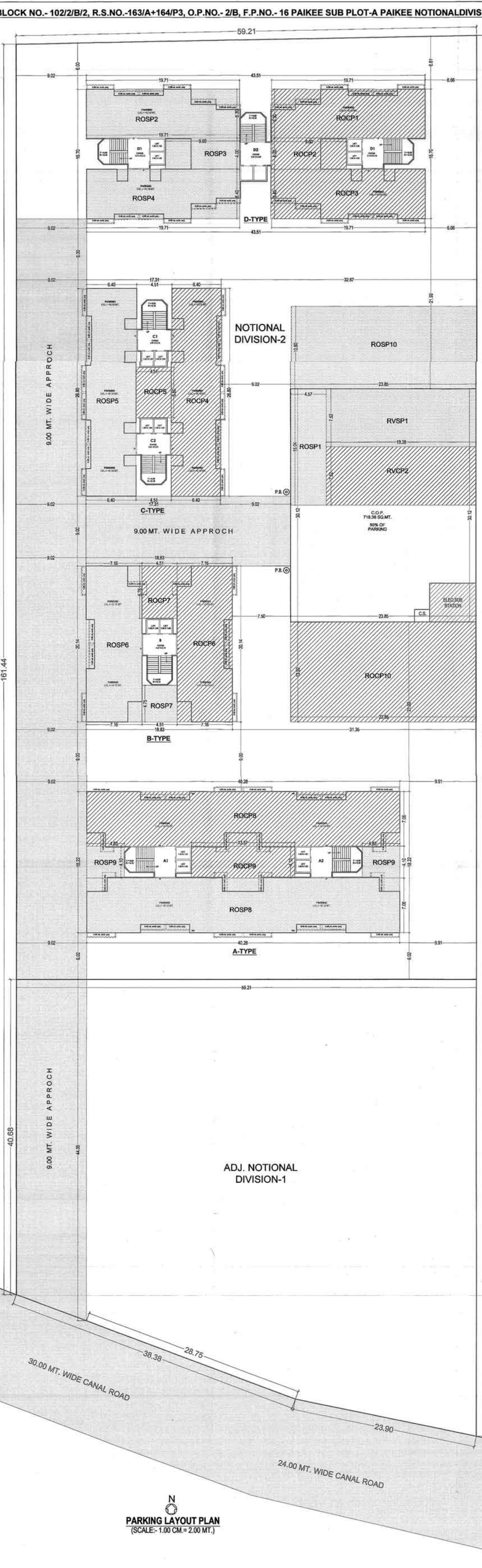


GROUND FLOOR PLAN
(SCALE: 1:200)



PARKING LAYOUT PLAN
(SCALE: 1:200)

NO.	A. REQUIRED PARKING (RESIDENTIAL)	PROPOSED PARKING IN SQ.MT.	REMARKS
1	PERMISSIBLE F.S.I. AREA 19,276.93 SQ.MT.	-	
2	PARKING REQUIRED @15% 19,276.93 X 0.15 = 2891.54 SQ.MT.	VP = 289.98 SQ.MT. 2893.87 CP = 1312.03 SQ.MT. 2905.90 SP = 1301.86 SQ.MT. 2907.76	VISITORS PARKING CAR PARKING SCOOTER PARKING
3	2891.54 X 0.10 = 289.15 SQ.MT. VISITORS PARKING @10% ON GR. LEVEL = 289.15 SQ.MT.	VP1 = 144.99 SQ.MT. (CAR) VP2 = 144.99 SQ.MT. (SCO)	VISITORS CAR PARK. VISITORS SCO PARK.
4	CAR PARKING @45% = 1301.19 SQ.MT. 2891.54 X 0.45 = 1301.19 SQ.MT.	CP1 = 1312.03 SQ.MT.	CAR PARKING
5	TWO WHEELER PARKING @ 45% = 1301.19 SQ.MT. 2891.54 X 0.45 = 1301.19 SQ.MT.	SC1 = 1301.86 SQ.MT.	SCOOTER PARKING

PROPOSED PARKING -

VISITORS PARKING:
RVSP1) 19.28 X 7.52 = 144.99 (CAR)
RVSP2) 19.28 X 7.52 = 144.99 (SCO)
TOTAL = 289.98 SQ.MT.
= 289.98 SQ.MT. > 289.15 SQ.MT.

CAR PARKING:
ROCP1) 18.71 X 6.30 = 124.17
ROCP2) 9.80 X 4.00 = 38.40
ROCP3) 19.71 X 6.40 = 126.14
ROCP4) 6.40 X 26.80 = 171.52
ROCP5) 4.51 X 6.60 = 29.77
ROCP6) 7.16 X 20.14 = 144.20
ROCP7) 4.51 X 6.78 = 30.49
ROCP8) 40.28 X 7.06 = 284.38
ROCP9) 13.37 X 4.10 = 54.82
ROCP10) 23.85 X 12.92 = 308.14
TOTAL = 1312.03 SQ.MT.
= 1312.03 SQ.MT. > 1301.19 SQ.MT.

SCOOTER PARKING

ROSP1) 4.57 X 15.04 = 68.73
ROSP2) 19.71 X 6.30 = 124.17
ROSP3) 6.60 X 4.00 = 38.40
ROSP4) 19.71 X 6.40 = 126.14
ROSP5) 6.40 X 26.80 = 171.52
ROSP6) 7.16 X 20.14 = 144.20
ROSP7) 4.51 X 4.75 = 21.42
ROSP8) 40.28 X 7.06 = 284.38
ROSP9) 4.51 X 6.78 = 30.49
ROSP10) 4.83 X 4.10 X 2 = 39.60
ROSP10) 23.85 X 10.60 = 252.81
TOTAL = 1040.05 SQ.MT.
= 1301.86 SQ.MT. > 1301.19 SQ.MT.

PERMISSIBLE PARKING IN C.O.P.
= 718.34 X 50%
= 359.17 SQ.MT.
PROPOSED PARKING IN C.O.P.
= RVSP1 + RVSP2 + ROSP1
= 144.99 + 144.99 + 68.73
= 358.71 SQ.MT. < 359.17 SQ.MT. PERMI.

OWNER SIGNATURE	ARCHITECT & PLANNER
X <i>D.H. Sanghani</i>	X <i>Brijeshbhai Chhaganbhai Patel</i>
DILIP HAZARIMAL SANGHAVI DIRECTED OF K.P. SANGHAVI INFRASTRUCTURE LLP. & PARTNER	BRIJESHBAI CHHAGANBAI PATEL
OF MANDREEP CORPORATION PARTNERSHIP FIRM 21, G. N. S. ROAD, A. N. WARD, SURAT	X <i>Rajeshbhai Balubhai Devganiya</i>
CHHAGANBAI MADHUBAI PATEL	BHARAT BALUBHAI DEVGANIYA K. R. S. ROAD, SURAT
	KRISHNAPALSINI B. GOHEL M. 12, SIDHGHRI APARTMENT, SURAT. PH. 0281-2478644, TOD / AR / 304